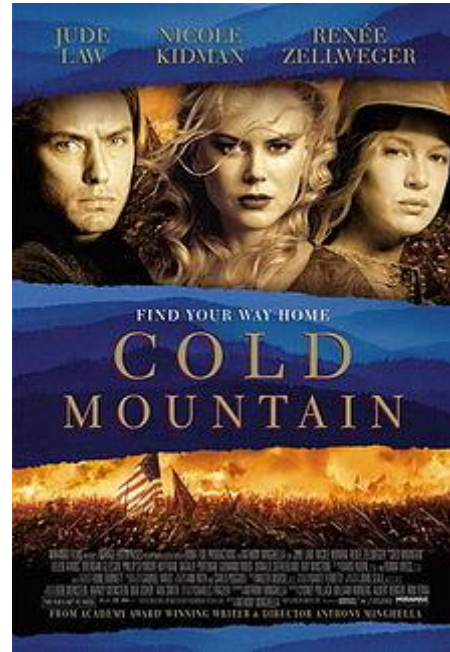


## Constructed Response on the novel *Cold Mountain*

Dr. Jay Seller

### Directions for your Constructive Response to *Cold Mountain*

- After you have read each of the constructed response questions below, select one to answer. The constructed response verbiage is listed below to assist you in this process.
- Responses are graded on quality not quantity, looking for thinking in your writing, and reflection on the article above.
- Use the film *Cold Mountain* to explore the characters and storyline in order to provide support for your answers and to properly address the questions.
- You may compose your response in a *Microsoft Word document*.
- Make sure to include your name and hour attached to your work.
- Email your assignment as an attachment or within the email your instructor. Subject line: *Cold Mountain* Assignment



#### Option One

Using the struggles of the two main characters of Inman and Ada, discuss how they battled with each of the following literary considerations, Man-vs.-Man, Man-vs.-Nature, and Man-vs.-Himself.

#### Option Two

Charles Frazier goes to great lengths in the exposition to describe the southern Blue Ridge Mountains. In your own words, describe the geography of this region, as the images were evoked in your mind while you were exploring the literature.

#### Option Three

In the movie written by screenwriter Anthony Minghella, numerous scenes and subplots were deleted in the interest of time. Select one deleted scene or subplot from the book that in your opinion would have enriched the beginning of the movie by its inclusion and discuss why?

#### Option Four

What is the analogy in the first chapter, as it is reflected in the title of that chapter, *the shadow of a crow*? (Analogy is the comparison of two pairs which have the same relationship. The key is to ascertain the relationship between the first so you can choose the correct second pair. Part to whole, opposites, results of are types of relationships you should find.) Further address how each of his chapter headings in some way bring light to the characters dilemmas in that chapter.

### Key Verbs and Tasks used in Constructive Response

## Constructed Response on the novel *Cold Mountain*

Dr. Jay Seller

- Analyze - Examining carefully by looking at the different parts of the whole and figuring out how they are related to each other.
- Apply - Using what you have learned to demonstrate show, or relate something.
- Compare - Using examples to show how things are similar.
- Contrast - Using examples to show how things are different.
- Evaluate - Making a judgment backed up with support.
- Infer - Making an educated guess or hypothesizing... reading between the lines.
- Interpret - Explaining a possible meaning of a text
- Paraphrase - Putting the author's ideas into your own words
- Predict - Using information available to make an educated guess about future events
- Summarize - Presenting the author's main ideas in a shortened form
- Support - Using specific facts to "back up" your answer, utilize details and examples from the text.
- Synthesize - Combining several ideas and making something new